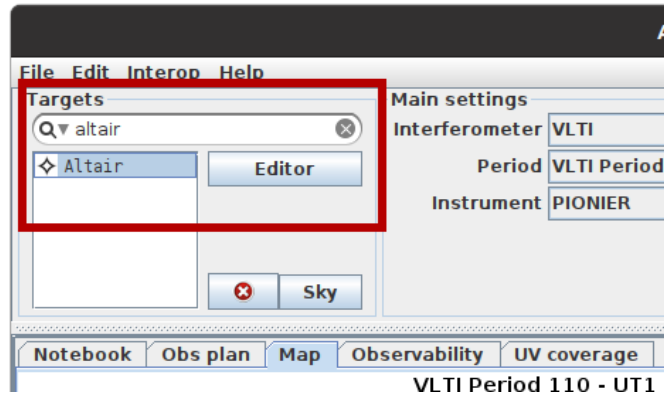


Send AMHRA images to Aspro2 with SAMP

The steps below explain how to use SAMP to send FITS images from the models to Aspro2.

This was tested with Aspro2 22.04 beta 2.

1. Open Aspro2 and select a star



2. Calculate an AMHRA model

In AMHRA, choose a model that generates a single FITS image, such as Kinematic Be disk, and launch an image generation.

Exponent of radial velocity law:

Non-coherent scattering

Global width: Å

Ratio of emission scattered in the line:

3. Send the image to Aspro2

When the result is available in AMHRA, use the VO tools to send the image to Aspro2:

Status

Your request terminated with the following status: Success

[Download result](#) [VO tools](#) ▾

[Download corresponding data](#) [Send to Aspro2](#)
[Unregister from SAMP Hub](#)

Logs

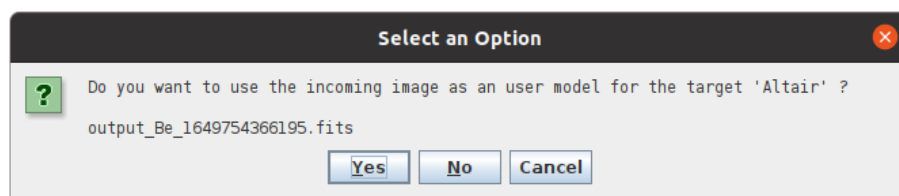
The calculation returned the following log:

Main log:

```
*** running idl code ***
```

4. Accept in Aspro2 the incoming image

Go back to the Aspro2 window. If Aspro2 was not already registered to a SAMP hub, a window asks to accept an incoming connection from AMHRA. After accepting it, and when the image has finished downloading, another window appears, asking for confirmation to use the image. Click “Yes”.



After accepting the image, the usual target opens automatically with the AMHRA data loaded:

